

Serving Tips:



Fill it! Remove the cap and scoop out the center to create a bowl. Fill with favorite salad ingredients, a chilled soup or even a hot entrée.

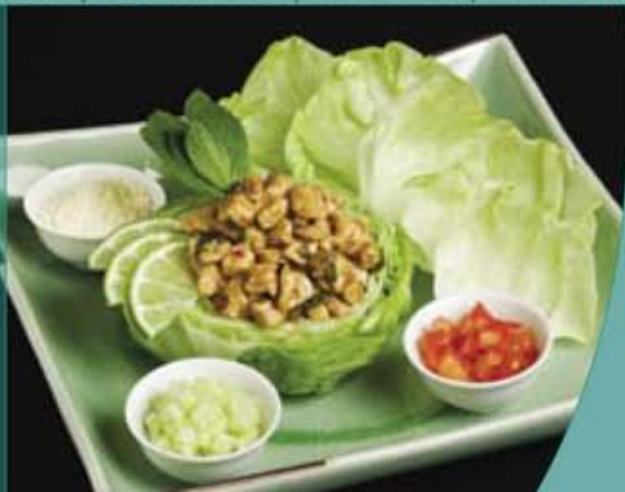
Build it! Remove the stem, core like conventional head lettuce and slice off the cap so it sits level on the plate. Insert vegetables in a vertical bouquet to create an architectural delight.

Slice it! Slice horizontally into rosettes and arrange in a bowl with other vegetables for an eye-catching version of the traditional tossed salad.

Wrap it! Use individual leaves as perfect, bite-sized wraps for appetizers and small plate favorites.

Wedge it! Cut into baby wedges and arrange on the plate, pairing each wedge with a different ingredient or dressing.

Let your culinary creativity take flight!



Specifications:

(Cardboard carton with plastic liner)

Iceberg Babies

Pack: 40 count

Weight: 16-18 pounds

Carton Dimensions: 19.5 x 16 x 7.0 inches

Pallet Count: 72

Label: Garden Hearts® Iceberg Babies™

Handling

Handle similarly to conventional iceberg.

Uncut, whole heads retain nutrients best.

Surface water from washing encourages bacterial growth, so this should be done just prior to use.

Storage

Keep refrigerated at 34 to 36 degrees Fahrenheit.

Maintain 90 to 100% relative humidity.

Shelf life is 14-21 days.



Boggiatto
PRODUCE, INC.



Boggiatto
PRODUCE, INC.

P.O. Box 2266 Salinas, California 93902

831.424.8952 | www.boggiatto.com

